

THE MOTION CONTROLLER



Complete Automation Solutions, Inc.

An Engineered Solutions Provider

Volume 2 Issue 10

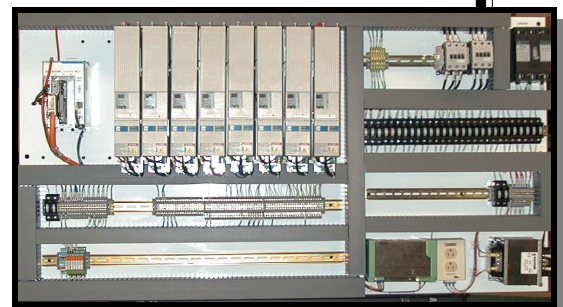
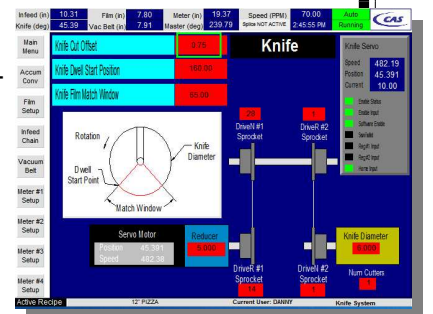
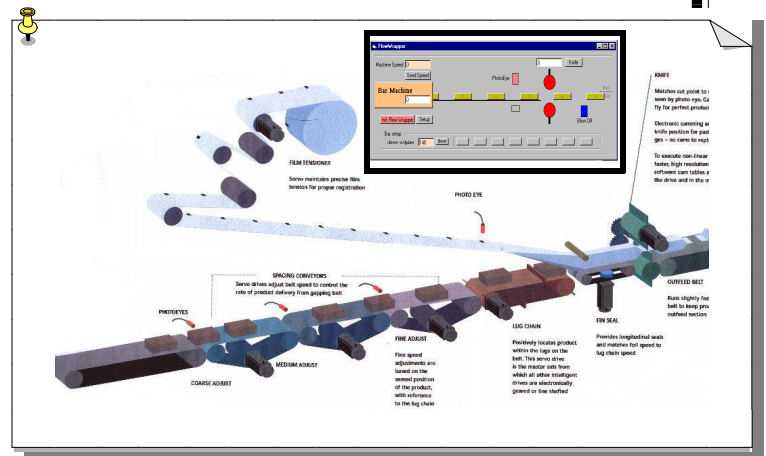
The Complete Flow™ Wrapper Retrofit

If you are in the market for a new flow wrapper, think twice.

CAS can upgrade your existing wrapper with a precise-digital servo control system for just a fraction of the cost !

CAS is proud to present the *Complete Flow™* Wrapper Retrofit Solution for horizontal flow wrappers with the following benefits:

- ✓ Faster Wrapping Speeds
- ✓ Precise Servo Driven Film Registration Control
- ✓ Dynamically Adjustable Electronic Cam for improved end sealing and cutting
- ✓ No Product No End Seal (Option)
- ✓ Out of Position Product No End Seal (Option)
- ✓ Simplified Production Setups, Recipe Handling, and Troubleshooting via the Color Touch Screen via Panel View 1000 Plus
- ✓ Allen-Bradley Digital SERCOS Servo Motors, Drives and Cabling
- ✓ AB Control Logix Controller using SERCOS
- ✓ Noise immune fiber optic communications that controls all servo motion via SERCOS
- ✓ Integrated ladder logic and graphical motion language to simplify troubleshooting and to further reduce the number of electrical components
- ✓ Stand-Alone Temperature Controllers (Optional Integrated Temperature Controls)
- ✓ Ethernet Standard (other Field Buses Optional)
- ✓ Optional Offsite Software Troubleshooting via Ethernet Connectivity
- ✓ Control System has flexibility to easily integrate additionally required servo motors and components.
- ✓ Powerful Machine Controller naturally incorporates automatic product feeders.
- ✓ NEMA 12 Enclosures (Optional NEMA 4X)



Look to CAS the Innovative Leader in Providing Robust Engineered Solutions to Meet Your Needs.

Contact CAS to have the *Complete Flow* Wrapper Retrofit system engineered to meet your specific needs.
Phone: 706.614.9434 ♦ Fax: 706.788.2518 ♦ 159 Gatewood Drive ♦ Colbert, Georgia 30628
Email: sales@cas-design.com ♦ Website: www.cas-design.com